

KIMBER BOLT ACTION RIFLE MODELS

SAFETY & INSTRUCTION MANUAL

WARNING

Before using this firearm, carefully read this manual in its entirety. Understand and follow all instructions and warnings.

This manual should always accompany this firearm and be transferred with the firearm upon change of ownership, or when the firearm is loaned or presented to another person.

A copy of this manual is available free via download from www.kimberamerica.com or upon request from Kimber customer service by calling (888) 243-4522.

If there is anything in this manual you do not understand, ask your retailer or call Kimber at (888) 243-4522.

HOW TO USE THIS MANUAL

Thank you for trusting your next shot to Kimber®.

Kimber Mfg., Inc. is a quality proven, American company which designs and manufactures premium firearms and less lethal products. Kimber's vision since its beginnings has always been to provide a superior product for all applications while never compromising in features, materials or performance. Kimber is currently headquartered in Troy, AL with locations in New Jersey, Montana and New York. Kimber products will provide a lifetime of service with proper operation and care.

This manual is not a comprehensive guide to firearm safety. Kimber® highly recommends that new shooters seek professional training from qualified instructors prior to handling any firearm. To help ensure safe and long-term enjoyment of a Kimber firearm, this manual should be read in its entirety and thoroughly understood.

This manual contains several safety warnings and instructions preceded with, **⚠️WARNING**, **⚠️CAUTION**, or **NOTICE**. These signal words are designed to draw your attention to important safety information. In certain situations, this manual also includes a NOTE.

⚠️WARNING

Before using this firearm, carefully read this manual in its entirety, understand and follow all instructions and warnings. Failure to read this manual and understand and follow all instructions and warnings may result in an unsafe condition that could cause death, serious injury or property damage.

▶ CONTENTS

SAFETY	4	CARE	60
Rules of Firearm Safety	4	Preventative Maintenance	60
Cable Lock	10	Long-Term Storage	62
Eye and Hearing Protection	12		
Safety Warnings.....	13	SUPPORT	64
		Warranty.....	64
SPECIFICATIONS	16	Obtaining Kimber Replacement Parts.....	66
OPERATION	26	Product Diagrams and Parts Lists.....	68
Performance Features.....	26	Returning a Firearm.....	74
Safety Features.....	38		
Ammunition.....	40		
Installing the Bolt.....	45		
Removal of the Bolt.....	46		
Disassembly of the Bolt	47		
Reassembly of the Bolt	48		
Trigger	49		
Loading.....	49		
Unloading.....	53		
Firing.....	56		

RULES OF FIREARM SAFETY

This manual contains several safety warnings and instructions preceded with, **⚠️WARNING**, **⚠️CAUTION**, or **NOTICE**. These signal words are designed to draw your attention to important safety information. In certain situations, this manual also includes a NOTE.

⚠️WARNING

Indicates circumstances, a condition or where failure to follow the Warning could result in death, serious injury and/or property damage.

⚠️CAUTION

Indicates a condition or circumstance where failure to follow the Caution could result in minor or moderate injury, and/or property damage.

NOTICE

Addresses safety or other practices or information not related to personal injury. Failure to follow the Notice could result in property damage.

NOTE

In certain situations this manual may also have a NOTE. A "NOTE" provides additional information regarding the use and function of this firearm, or highlights other important points.

⚠️WARNING

Read through the entire manual before attempting to use this product. Safe operation of this firearm is your obligation, and requires that you completely read and understand this manual in its entirety.

⚠️WARNING

Always treat this and any other firearm as if it were loaded. Never take anyone's word that a firearm is unloaded. Clear it yourself with finger off the trigger and the muzzle pointed in a safe direction. First remove the magazine, then lock the slide open and visually and physically check to ensure that no round is chambered. Always make sure the firearm is unloaded and

the slide locked open before laying it down or handing it to someone else.

⚠️WARNING

Prior to use, learn the mechanical and handling characteristics, and operation of the firearm you are using. Not all firearms are the same.

⚠️WARNING

Always keep the muzzle pointed in a safe direction. Never point this or any other firearm at anything you do not intend to shoot.

⚠️WARNING

Never place your finger inside the trigger guard or on the trigger unless you intend to fire.

⚠️WARNING

Do not attempt to practice loading or unloading, firing or otherwise handling or using this firearm without a thorough understanding of its safe operation.

⚠️WARNING

Never carry a firearm loaded unless you have first obtained training from a qualified instructor in holstering, drawing and carrying a loaded handgun.

⚠️WARNING

Do not carry a loaded firearm with a live round in the chamber while walking, running, crossing or climbing a fence, stream, ditch or any obstacle, or where there is any possibility of slipping or falling, as this could lead to a possible unintentional discharge.

⚠️WARNING

This product was designed to function properly in its original condition. Do not alter any part or add or substitute parts or accessories not made or authorized for use by Kimber. Any such alteration could render the firearm unsafe and will void the warranty.

⚠ WARNING

Always make sure that this firearm is in top working condition and that no internal or external parts have been damaged as a result of corrosion, improper maintenance or dropping. If evidence of these conditions exist, have it inspected by a competent gunsmith or contact Kimber prior to use.

⚠ WARNING

Firearms should be unloaded when not actually in use. For increased safety, firearms should be stored unloaded in a location that is secure (for example, apply the supplied cable lock to the firearm and lock the firearm in a gun safe) and inaccessible to children and any other unauthorized person, with ammunition locked securely in a different location.

⚠ WARNING

Keep out of reach of children. For increased safety, firearms should be stored unloaded in a location that is secure and inaccessible to children and any other unauthorized person. Ammunition should be locked securely in a different location.

⚠ WARNING

Any firearm that is not under your direct immediate control should be unloaded and rendered inoperable (for example, by use of a cable lock) and inaccessible to unauthorized users.

⚠ WARNING

Be sure of your target and beyond. Make sure that your backstop is adequate to stop bullets prior to shooting.

⚠ WARNING

While on the range, be sure to carry this firearm cleared, with slide locked open and muzzle pointed in a safe direction, until ready to shoot.

⚠ WARNING

Obey all range rules at all times.

⚠ WARNING

Always wear adequate hearing and eye protection when using any firearm.

⚠ WARNING

Always ensure that barrel and action are clear of obstructions before shooting. Shooting a blocked firearm can result in death or serious injury and damage to the firearm and/or property.

⚠ WARNING

NEVER rely exclusively on mechanical or visual safeties, as any mechanical device can fail.

⚠ WARNING

Use correct ammunition.

⚠ WARNING

Do not alter or modify your firearm and have firearms serviced regularly.

⚠ WARNING

Never drink alcoholic beverages or take drugs prior to or during shooting or handling of this or any other firearm, as this could affect or impair your vision, coordination and judgment, and may have other legal consequences.

⚠ WARNING

Seek a doctor's advice if you are taking any medication prior to engaging in any shooting activity.

⚠ WARNING

Immediately unload and clear this firearm when you are finished shooting it.

WARNING

Never shoot at any hard or flat surface, such as rock, metal or water. The resulting ricochet could result in death, serious injury or property damage.

WARNING

Always make sure the firearm is unloaded before cleaning.

WARNING

Never force a jammed action. This could cause a round to explode resulting in death, serious injury or property damage.

WARNING

If your firearm fails to fire when the trigger is pulled, handle with care. If the firearm fails to fire when the trigger is pulled, slow primer ignition (hangfire) may possibly be the cause. Keep the muzzle pointed downrange at the target for a minimum of 30 seconds. If the round still does not fire, remove the magazine, clear the firearm while keeping the muzzle pointed in a safe direction and the ejection port turned away from your face, eyes and other body parts, and examine the ejected, unfired cartridge. If the indent from the firing pin is off center, light or absent, take the firearm to a competent gunsmith. If the indent appears normal compared to other rounds, assume a faulty round, separate from other cartridges, reload and continue shooting.

WARNING

Never use this firearm in any manner other than that for which it was specifically designed.

WARNING

Never act in an irresponsible manner or ignore any established rules of safety when using or storing firearms.

WARNING

This product is a firearm and can be a lethal weapon. Failure to read and properly follow the instructions and warnings in this manual could result in death, serious injury or damage to property.

CAUTION

Make sure all other shooters and bystanders are well away from the ejection port. Empty cases are ejected under force and may cause injury if someone is struck.

CAUTION

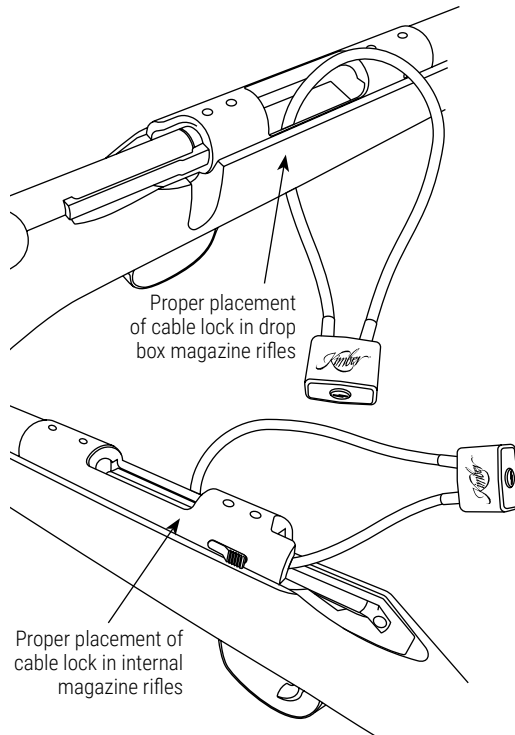
Never shoot the firearm with your thumb or other body part directly behind the slide, or you could be injured when the slide and firearm recoil in firing.

Kimber Mfg., Inc. shall not be responsible for any death, physical injury or property damage that is the result of the proper or improper use of this product.

CABLE LOCK

To use cable lock provided with this firearm:

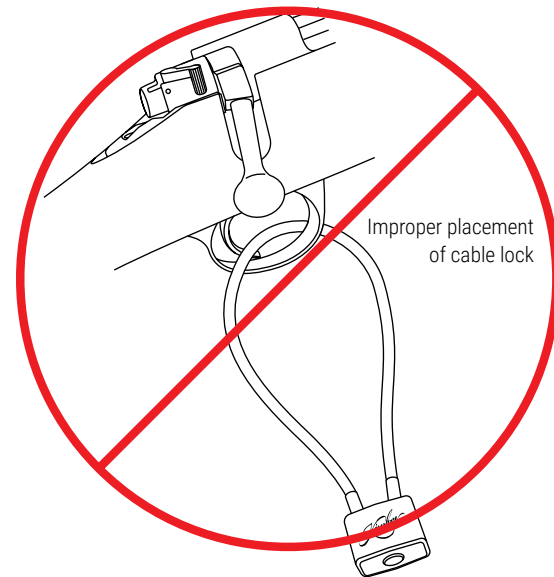
1. Point the muzzle of the firearm in a safe direction and keep fingers outside of the trigger guard and clear of the trigger throughout the following steps.
2. Unload the firearm following the unloading procedures specified in this manual (see pages 53-55), finishing by visually confirming that the action is clear of ammunition. We recommend that the internal or removable box magazine (where applicable) be unloaded and ammunition be stored separately.
3. Ensure the bolt is removed. (see page 46)
4. Take the open end of the cable lock and direct it down through the open bolt channel and out through the ejection port. Insert the open end into the lock, then turn and remove the key. Keep the key stored in a separate location from the firearm, lock and unauthorized person, and out of reach of children.



IMPROPER INSTALLATION OF CABLE LOCK

⚠ WARNING

Improper installation of the cable lock through the trigger guard can result in accidental discharge causing death, serious injury or property damage. While locking devices are an important aid to security measures, they are not a substitute for safe firearm handling and proper storage. Mechanical and locking devices can fail and/or be bypassed with enough time, knowledge, determination and equipment.



EYE AND HEARING PROTECTION

Always wear safety glasses that meet the requirements of the American National Standards Institute (ANSI) Z87.1 and commercially manufactured hearing protection when shooting.

Additionally, those in close proximity when shooting should also wear the appropriate eye and hearing protection.

If you and/or others in close physical proximity do not wear appropriate eye protection, then you risk a serious, permanent eye injury up to and possibly including blindness. Hearing protection at all times during shooting is necessary to help prevent partial or permanent hearing loss.

WARNING

Always wear the appropriate eye and hearing protection during shooting. Failure to do so may result in hearing loss and/or eye injury.

LEAD EXPOSURE

WARNING

Discharging firearms in poorly ventilated areas, cleaning firearms or handling ammunition may result in exposure to lead and other substances known to cause birth defects, reproductive harm, cancer and other serious physical injury. Have adequate ventilation at all times. Wash hands thoroughly after exposure.

STATE REQUIRED SAFETY WARNINGS

Certain states require, by law, that their own specified warning notices be conspicuously included in larger than normal type by the manufacturer, distributor or retail dealer with firearms sold in that state. Kimber Mfg., Inc. sells products in compliance with applicable laws and regulations. As Kimber products may be sold in these states, the following warnings are included:

WARNING

This product can expose you to chemicals including lead, which is known to the State of California to cause cancer and birth defects or other reproductive harm. For more information go to www.P65Warnings.ca.gov.

CALIFORNIA:

WARNING

"Children are attracted to and can operate firearms that can cause severe injuries or death. Prevent child access by always keeping guns locked away and unloaded when not in use. If you keep a loaded firearm where a child obtains and improperly uses it, you may be fined or sent to prison."

ADVERTENCIA

"A los niños los atraen las armas de fuego y las pueden causarse lesiones graves y la muerte. Evite que los niños tengan acceso a las armas de fuego guardándolas siempre con llave y descargadas cuando no las esté utilizando. Si usted tiene un arma de fuego cargada en un lugar en que un niño tiene acceso a ella y la usa indebidamente, le pueden dar una multa o enviarlo a la cárcel."

CONNECTICUT:

"UNLAWFUL STORAGE OF A LOADED FIREARM MAY RESULT IN IMPRISONMENT OR FINE."

FLORIDA:

"IT IS UNLAWFUL, AND PUNISHABLE BY IMPRISONMENT AND FINE, FOR ANY ADULT TO STORE OR LEAVE A FIREARM IN ANY PLACE WITHIN THE REACH OR EASY ACCESS OF A MINOR UNDER 18 YEARS OF AGE OR TO KNOWINGLY SELL OR OTHERWISE TRANSFER OWNERSHIP OR POSSESSION OF A FIREARM TO A MINOR OR A PERSON OF UNSOUND MIND."

MAINE:

"ENDANGERING THE WELFARE OF A CHILD IS A CRIME. IF YOU LEAVE A FIREARM AND AMMUNITION WITHIN EASY ACCESS OF A CHILD, YOU MAY BE SUBJECT TO FINE, IMPRISONMENT OR BOTH. KEEP FIREARMS AND AMMUNITION SEPARATE. KEEP FIREARMS AND AMMUNITION LOCKED UP. USE TRIGGER LOCKS."

MARYLAND:

"WARNING: Children can operate firearms which may cause death or serious injury. It is a crime to store or leave a loaded firearm in any location where an individual knew or should have known that an unsupervised minor would gain access to the firearm. Store your firearm responsibly!"

MASSACHUSETTS:

"WARNING FROM THE MASSACHUSETTS ATTORNEY GENERAL: This handgun is not equipped with a device that fully blocks use by unauthorized users. More than 200,000 firearms like this one are stolen from their owners every year in the United States. In addition, there are more than a thousand suicides each year by younger children and teenagers who get access to firearms. Hundreds more die from accidental discharge. It is likely that many more children sustain serious wounds, or inflict such wounds accidentally on others. In order to limit the chance of such misuse, it is imperative that you keep this weapon locked in a secure place and take other steps necessary to limit the possibility of theft or accident. Failure to take reasonable preventive steps may result in innocent lives being lost, and in some circumstances may result in your liability for these deaths."

"IT IS UNLAWFUL TO STORE OR KEEP A FIREARM, RIFLE, SHOTGUN OR MACHINE GUN IN ANY PLACE UNLESS THAT WEAPON IS EQUIPPED WITH A TAMPER-RESISTANT SAFETY DEVICE OR IS STORED OR KEPT IN A SECURELY LOCKED CONTAINER."

NEW JERSEY:

"IT IS A CRIMINAL OFFENSE TO LEAVE A LOADED FIREARM WITHIN EASY ACCESS OF A MINOR."

NEW YORK CITY, NY:

"THE USE OF A LOCKING DEVICE OR SAFETY LOCK IS ONLY ONE ASPECT OF RESPONSIBLE WEAPON STORAGE. ALL WEAPONS SHOULD BE STORED UNLOADED AND LOCKED IN A LOCATION THAT IS BOTH SEPARATE FROM THEIR AMMUNITION AND INACCESSIBLE TO CHILDREN AND ANY OTHER UNAUTHORIZED PERSONS. NEW YORK CITY LAW PROHIBITS, WITH CERTAIN EXCEPTIONS, ANY PERSON FROM ACQUIRING MORE THAN ONE FIREARM, OR MORE THAN ONE RIFLE OR SHOTGUN, WITHIN A 90-DAY PERIOD."

NORTH CAROLINA:

"IT IS UNLAWFUL TO STORE OR LEAVE A FIREARM THAT CAN BE DISCHARGED IN A MANNER THAT A REASONABLE PERSON SHOULD KNOW IS ACCESSIBLE TO A MINOR."

TEXAS:

"IT IS UNLAWFUL TO STORE, TRANSPORT, OR ABANDON AN UNSECURED FIREARM IN A PLACE WHERE CHILDREN ARE LIKELY TO BE AND CAN OBTAIN ACCESS TO THE FIREARM."

WISCONSIN:

"IF YOU LEAVE A LOADED FIREARM WITHIN THE REACH OR EASY ACCESS OF A CHILD YOU MAY BE FINED OR IMPRISONED OR BOTH IF THE CHILD IMPROPERLY DISCHARGES, POSSESSES OR EXHIBITS THE FIREARM."

NOTE

The above warnings are not intended to be exhaustive. Laws and regulations change constantly. Please check with your State Attorney General's Office or local law enforcement authority regarding laws and regulations that may be applicable.

CLASSIC RIFLES

Action / Caliber
84M, 84L, 8400 WSM, 8400 MagnumFor the most up-to-date caliber offerings,
please visit kimberamerica.com

Barrel Length
84M22 inch Carbon Steel
84L24 inch Carbon Steel
8400 WSM.....24 inch Carbon Steel
8400 Magnum26 inch Carbon Steel

Weight (Unloaded)
84M5 pounds, 10 ounces
84L6 pounds, 2 ounces
8400 WSM.....6 pounds, 10 ounces
8400 Magnum7 pounds, 4 ounces

Drop at Heel.....54 inches
Drop at Comb.....43 inches

Overall Length
84M41.25 inches
84L43.75 inches
8400 WSM.....43.50 inches
8400 Magnum46.50 inches
Action.....Steel, Matte
Stock.....Glass Bedded, French Walnut
Muzzle.....Non-Threaded
Magazine.....Internal with Hinged Floor Plate
Safety Devices3-Position Safety

MOUNTAIN RIFLES

Action / Caliber

84M, 84L, 8400 WSM, 8400 Magnum.....For the most up-to-date caliber offerings,
please visit kimberamerica.com

Barrel Length

84M 24 inch / 22 inch / 18 inch Stainless Steel or Carbon Fiber
84L 24 inch Stainless Steel
8400 WSM..... 24 inch Stainless Steel
8400 Magnum..... 26 inch Stainless Steel

Weight (Unloaded)

84M Starting at 4 pounds, 13 ounces
84L Starting at 5 pounds, 5 ounces
8400 WSM..... Starting at 6 pounds, 3 ounces
8400 Magnum..... Starting at 6 pounds, 13 ounces

Drop at Heel 54 inches

Drop at Comb 43 inches

Overall Length

84M 43. 25 inches / 41.25 inches / 37.25 inches
84L 43.75 inches
8400 WSM..... 43.50 inches
8400 Magnum..... 46.50 inches

Action.....Stainless Steel

StockReinforced Composite

Muzzle Threaded (Brake included with Mountain Ascent)

Magazine Internal / Hinged Floor Plate

Safety Devices 3-Position Safety

HUNTER RIFLES

Action / Caliber

84M, 84LFor the most up-to-date caliber offerings,
please visit kimberamerica.com

Barrel24 inch / 22 inch Stainless Steel

Weight (Unloaded)

84MStarting at 5 pounds, 7 ounces

84LStarting at 5 pounds, 13 ounces

Drop at Heel0.54 inches

Drop at Comb0.43 inches

Overall Length

84M41.25 inches

84L43.75 inches

ActionStainless Steel

StockPolymer

MuzzleNon-Threaded (Brake included with Pro version)

MagazineFlush-Fit Drop Box

Safety Devices3-Position Safety

VARMINT RIFLES

Action / Caliber

84MFor the most up-to-date caliber offerings,
please visit kimberamerica.com

Barrel26 inch / 24 inch Stainless Steel

Weight (Unloaded)Starting at 7 pounds, 5 ounces

Drop at Heel0.54 inches / 1.75 inches

Drop at Comb0.43 inches / 0.25 inches

Overall Length45.25 inches / 43.25 inches

ActionStainless Steel / Matte Steel

StockGlass Bedded, French Walnut / Laminated

MuzzleNon-Threaded

MagazineHinged Floor Plate

Safety Devices3-Position Safety

TACTICAL RIFLES

Action / Caliber

8400 ShortFor the most up-to-date caliber offerings,
please visit kimberamerica.com

Barrel16 inch / 22 inch Stainless Steel

Weight (Unloaded)

8400 ShortStarting at 10 pounds, 8 ounces

Drop at Heel0.54 inches / 0.43 inches / adjustable

Drop at Comb0.43 inches / 0.38 inches / adjustable

Overall Length

8400 Short37 inches / 43 inches / adjustable

ActionSteel

StockAluminum Chassis

MuzzleNon-Threaded / Threaded with Thread Protector

MagazineDrop Box Magazine

Safety devices3-Position Safety

DANGEROUS GAME RIFLES

Action / Caliber

8400 Magnum.....For the most up-to-date caliber offerings,
please visit kimberamerica.com

Barrel24 inch Stainless or Carbon Steel with Express Sights

Weight (Unloaded)

8400 Magnum.....Starting at 7 pounds, 5 ounces

Drop at Heel0.54 inches / 1.75 inches

Drop at Comb0.43 inches / 0.25 inches

Overall Length44.50 inches

ActionSteel

StockGlass Bedded, French Walnut / Reinforced Composite

MuzzleFront Sight, Non-Threaded

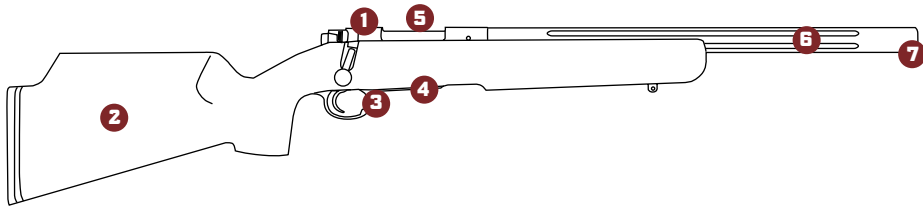
MagazineInternal / Hinged Floor Plate

Safety Devices3-Position Safety

PERFORMANCE FEATURES

Classic Rifles / Varmint Rifles

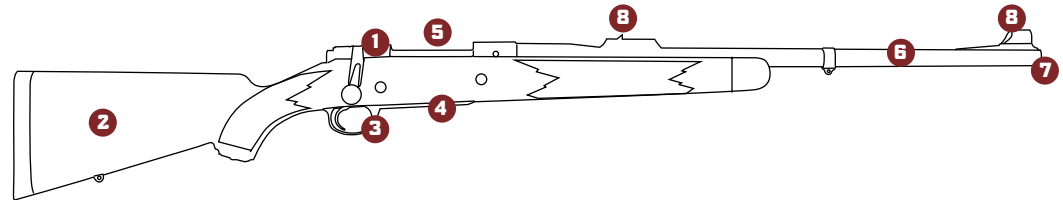
1. Bolt
2. Stock
3. Trigger & Trigger Guard
4. Floor Plate
5. Receiver
6. Barrel
7. Muzzle



PERFORMANCE FEATURES

Dangerous Game Rifles

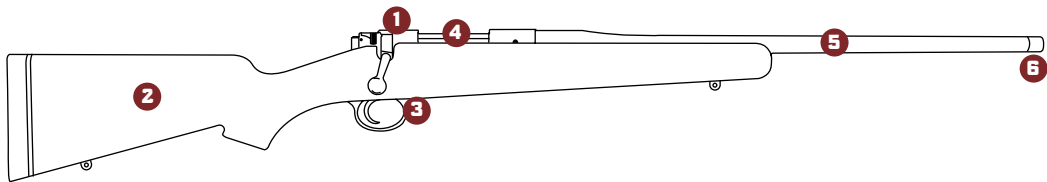
1. Bolt
2. Stock
3. Trigger & Trigger Guard
4. Floor Plate
5. Receiver
6. Barrel
7. Muzzle
8. Express Sights



PERFORMANCE FEATURES

Mountain Rifles

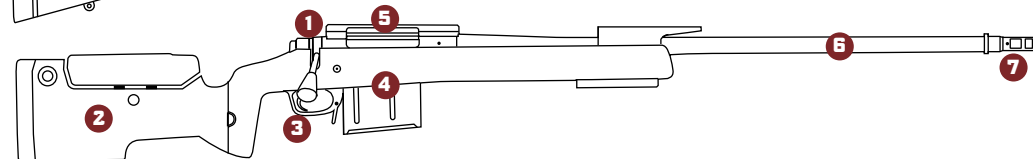
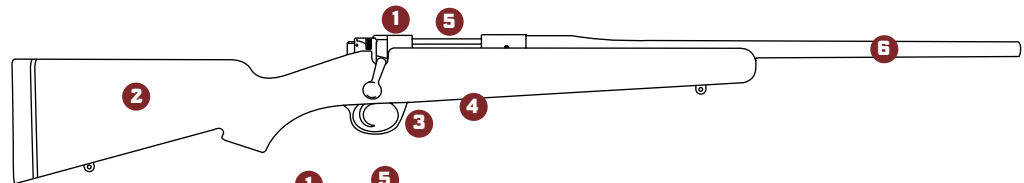
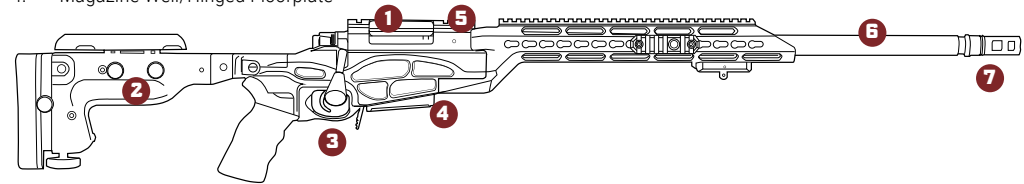
1. Bolt
2. Stock
3. Trigger & Trigger Guard
4. Receiver
5. Barrel
6. Threaded Muzzle with Brake and/or Thread Protector



PERFORMANCE FEATURES

Hunter Rifles / Tactical Rifles

1. Bolt
2. Stock
3. Trigger & Trigger Guard
4. Magazine Well/Hinged Floorplate
5. Receiver
6. Barrel
7. Threaded muzzle with brake and/or thread protector



SAFETY FEATURES

The rifle is equipped with safety features which can, if properly used, help minimize the danger of an unintentional discharge.

⚠ WARNING

While this firearm has design features to help prevent an unintentional discharge if the firearm is dropped or hit, never exclusively rely on such features as mechanical devices can fail, and such features are not a substitute for safe handling practices and proper maintenance.

Trigger Guard

The trigger guard surrounds the trigger, protecting it against damage and accidental discharge.

⚠ WARNING

Never put your finger inside the trigger guard until you intend to fire.

3-Position Safety

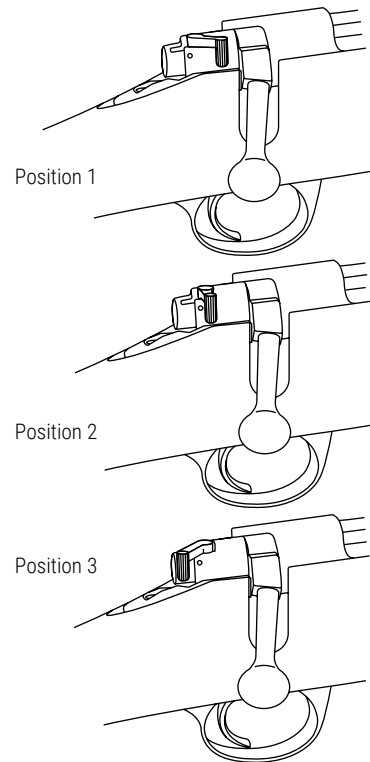
The safety lever is a traditional 3 position, which allows unloading from the safe position. When the safety is in the full rearward position, the bolt is locked and a cartridge cannot be removed.

The safety lever is located at the right rear of the bolt. There are 3 positions of the safety lever.

Position 1 The safety lever is fully forward. The rifle will fire upon pulling the trigger.

Position 2 The safety lever is at half forward position. The rifle's safety is engaged, and the bolt is free to be opened to unload or view the chamber.

Position 3 The rifle's safety lever is pulled completely to the rear; the safety is on and the bolt is locked into position.



Engaging and Disengaging the Safety

To engage the safety, pull the serrated lever fully to the rear, "Position 3." When you are prepared to fire, push the serrated lever fully to the forward position, "Position 1." When the safety is disengaged, you will see a red dot at the base of the safety lever. To unload the rifle or to view the rifle's chamber, you must first engage the safety to the rear, "Position 3," before then moving the safety lever to the half-forward position, "Position 2," at which point it is safe to open the bolt for inspection or unloading.

⚠ WARNING

The rifle should never be carried loaded with the safety lever in Position 2. The safety lever may be manipulated forward making the rifle ready to fire without the knowledge of the user which could result in an unsafe condition that may cause death, serious injury or property damage.

⚠️ WARNING

Placing the safety in an intermediate position between “Position 1”, “Position 2” or “Position 3” can result in the user thinking the firearm is in a safe or fire position when it is not. Pulling the trigger with the safety in an intermediate position may cause the firearm to fire. Therefore, always move the safety fully to its intended position, “Position 1”, “Position 2” or “Position 3,” and then check to be sure it is where you want it to be. Never attempt to shoot the firearm with the safety lever only partially engaged, as the firearm may discharge and could result in death, serious injury or property damage.

⚠️ WARNING

Read through the entire manual before attempting to use this product. Safe operation of this firearm is your obligation, and requires that you completely read and understand this manual in its entirety.

AMMUNITION

Kimber firearms are designed to function effectively with quality factory-manufactured ammunition in the caliber for which the firearm is chambered. The following is information to help avoid potential ammunition related problems.

⚠️ WARNING

Do not use reloaded, hand-loaded, remanufactured or other non-standard ammunition because its pressures could exceed maximums established by the Sporting Arms and Ammunition Manufacturers’ Institute, Inc. of the United States (SAAMI) and result in an unsafe condition that may cause death, serious injury, or property damage.

1. Kimber recommends the use of high quality American factory-made ammunition.
2. Do not oil cartridges or spray lubricants, preservatives or cleaners on cartridges or where excess spray may come into contact with cartridges. Lubricants and other foreign

matter on cartridges may cause potentially dangerous ammunition malfunctions. Use only ammunition of the caliber for which a firearm is chambered.

3. **The use of reloaded, hand-loaded, remanufactured or other non-standard ammunition voids all warranties.** Kimber specifically disclaims responsibility for any injury or damage whatsoever occurring in connection with, or as a result of, the use in Kimber firearms of faulty, reloaded, hand-loaded, remanufactured or other non-standard ammunition, or of cartridges other than those for which the firearm was originally chambered.
4. **Use only ammunition of the caliber for which a firearm is chambered. Improper ammunition and improperly loaded ammunition can be extremely dangerous. Serious injury to the shooter or to others and severe damage to the firearm may result.** Always use ammunition that complies with the industry performance standards established by SAAMI. **Death,**

serious injury, or damage to the firearm may result from any condition causing excessive pressure inside the chamber or barrel when a round is fired. Excess pressure may be caused by obstruction in the barrel, propellant powder overloads or by the use of incorrect or improperly- assembled cartridges. In addition, the use of a dirty, corroded or damaged cartridge may lead to a burst case and consequent damage to the firearm and personal injury from the sudden escape of high-pressure propellant gas within the firearm’s mechanism.

5. **Immediately stop shooting, unload the firearm as directed in this manual (see pages 53-55), and check the barrel for a possible obstruction whenever:**
 - **The trigger and/or bolt binds, or**
 - **Unburned grains of powder are noticed in or around the firearm, or**
 - **A shot sounds weak or abnormal, or recoil is less than usual**

⚠WARNING

In the above and other cases, it is possible that a bullet is lodged part way down the barrel. Firing a subsequent bullet into an obstructed barrel may cause death, serious injury, or damage to the firearm.

Bullets may become lodged in the barrel:

- If the cartridge has been improperly loaded without propellant powder or if the powder fails to ignite. In this case, ignition of the primer alone may push the bullet out of the cartridge case and into the barrel but usually does not generate sufficient energy for the bullet to exit the barrel.
- If the bullet is loose or improperly seated within the cartridge case. When such a cartridge is extracted from the chamber without being fired, the bullet may be left behind in the bore at the point where the rifling begins. Subsequent chambering of another cartridge can push the first bullet farther into the bore and create an obstructed barrel.

6. If there is any reason to suspect that a bullet is obstructing the barrel, immediately unload the firearm as directed in this manual (see pages 53-55) and remove the bolt. (see page 46) Then, insert a cleaning rod or other non-steel rod that is smaller than the bore diameter from the barrel's muzzle all the way through to the barrel's breech end to confirm that the barrel is not obstructed.

⚠WARNING

If a bullet is in the bore or lodged in the barrel, do not attempt to shoot it out by using another cartridge, by blowing it out with a blank or with a cartridge from which the bullet has been removed. Such actions can generate excessive pressure, cause death, serious personal injury or property damage.

If the bullet can easily be removed with a wood or brass dowel (using hand pressure only; never "hammer" a bullet lodged in the bore) clean any unburned powder grains from the bore, chamber, and mechanism and call Customer Service. If the

bullet cannot be dislodged without force, take the firearm to a professional gunsmith or contact Kimber Customer Service.

7. Dirt, corrosion or other foreign matter on a cartridge can impede complete chambering which in turn may cause the cartridge case to burst upon firing. The same is true of cartridges which are damaged or deformed.
8. Do not oil cartridges and be sure to always wipe the chamber clean of any oil preservative that may be present before inserting cartridges into the magazine or firing. Oil interferes with the friction between the cartridge case and chamber wall that is necessary for safe functioning, and subjects the firearm to stress similar to that imposed by excessive pressure.
9. Use quality lubricants on all moving parts of the firearm in accordance with the lubrication instructions (see pages 60-62) of this manual. Avoid excessive spraying of aerosol products, especially where it may contact or contaminate ammunition. All lubricants,

and aerosol spray lubricants in particular, can penetrate cartridge primers and cause misfires. Some highly-penetrative lubricants can also get inside cartridge cases and cause deterioration of the propellant powder so that upon firing the powder may not ignite. If only the primer ignites, there is a danger that the bullet may become lodged in the barrel.

To reduce oil and solvent contamination of cartridges, use a clean patch to remove excess cleaner and lubricant from the chamber, the bolt and bolt breech face, and the magazine and magazine follower.

⚠WARNING

Never use ammunition not specifically designated for use in your firearm. Failure to use the correct type or caliber of ammunition may cause the firearm to jam, fail to fire, have an obstructed bore, or even generate excessive pressure, which can cause death, serious injury or property damage.

⚠ WARNING

If a bullet is in the bore or lodged in the barrel, do not attempt to shoot it out by using another cartridge, by blowing it out with a blank or with a cartridge from which the bullet has been removed. Such actions can generate excessive pressure, and cause death, serious personal injury or property damage.

⚠ WARNING

Death, serious injury or property damage can result from a bore obstruction.

⚠ WARNING

Do not use reloaded, hand-loaded, remanufactured or other non-standard ammunition. Use of any such ammunition can cause death, serious injury or property damage, and voids all warranties. Kimber specifically disclaims responsibility for any damage or injury whatsoever occurring in connection with, or as a result of, the use in Kimber firearms of faulty, reloaded, hand-

loaded, remanufactured or other non-standard ammunition, or of cartridges other than those for which the firearm was originally chambered.

⚠ WARNING

Do not oil cartridges or spray lubricants, preservatives or cleaners on cartridges or where excess spray may come into contact with cartridges. Lubricants and other foreign matter on cartridges may cause potentially dangerous ammunition malfunctions. Oil and solvent can penetrate cartridge primers and can cause misfires.

⚠ WARNING

Read through the entire manual before attempting to use this product. Safe operation of this firearm is your obligation, and requires that you completely read and understand this manual in its entirety.

INSTALLING THE BOLT

This rifle ships from the factory completely assembled except for the bolt, which has been removed for safety during transportation and storage. The bolt is packed separately in the shipping conveyance.

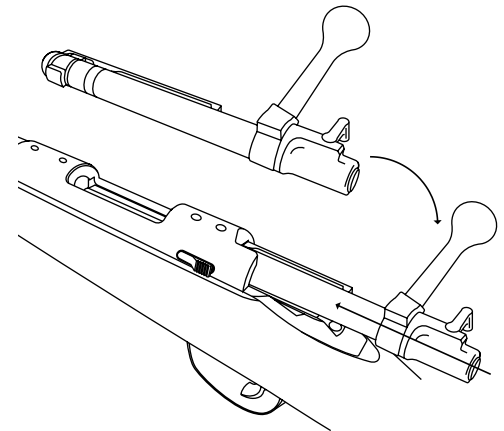
1. Point the muzzle in a safe direction at all times.
2. Keep your finger outside the trigger guard and do not touch the trigger while installing the bolt.
3. Hold the rifle in your left hand.
4. With your right hand, slip the bolt head forward into the receiver.
5. Once the bolt is fully inserted, rotate the bolt handle clockwise to the fully closed position.

NOTE

Special care should be taken to not contact the comb of the stock when installing the bolt as cosmetic damage could occur.

⚠ WARNING

If the magazine is not removed (as applicable) and/or completely unloaded prior to cycling the bolt to clear the chamber, a cartridge in the magazine will be chambered when the bolt is closed. Removing the magazine (Hunter & Tactical Rifles only) alone will not unload the rifle. Once the magazine has been removed and/or completely unloaded, open the bolt and visually confirm the chamber is empty.



REMOVAL OF THE BOLT

⚠ WARNING

If the magazine is not removed (as applicable) and/or completely unloaded prior to cycling the bolt to clear the chamber, a cartridge in the magazine will be chambered when the bolt is closed. Removing the magazine (Hunter & Tactical Rifles only) alone will not unload the rifle. Once the magazine has been removed and/or completely unloaded, open the bolt and visually confirm the chamber is empty.

⚠ WARNING

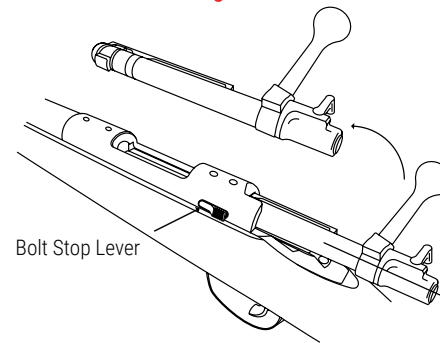
The firearm is able to fire with and without the magazine inserted if there is a cartridge in the chamber.

The bolt should be removed from the rifle and stored separately while cleaning, servicing, transporting or storing this rifle.

1. Point the muzzle in a safe direction at all times.
2. Move the safety to position 2.
3. Keep your finger outside the trigger guard at all times and do not touch the trigger while removing the bolt.
4. Open the bolt and confirm the chamber and magazine are unloaded. Do not proceed unless unloaded.
5. If unloaded, close the bolt.
6. Rotate the bolt handle counter-clockwise to the fully open position and slide the bolt to the rear.
7. Locate the bolt stop lever at the left-rear section of the receiver.
8. While pushing-in the bolt stop lever, pull the bolt fully to the rear and clear of the receiver.

NOTE

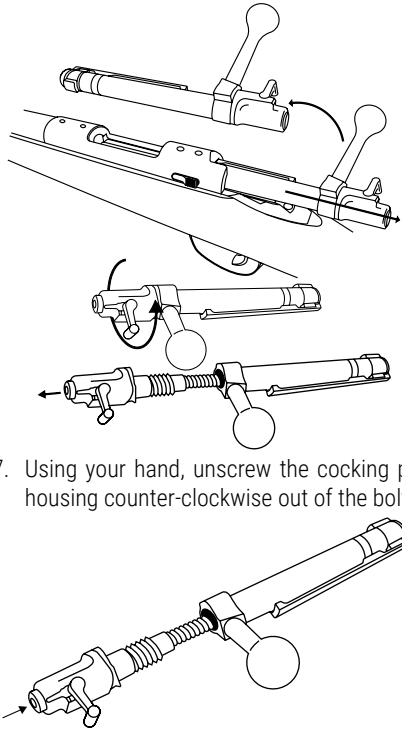
Special care should be taken to not contact the comb of the stock when removing the bolt as cosmetic damage could occur.



DISASSEMBLY OF THE BOLT

The bolt should only be partially disassembled as outlined in this manual for routine cleaning. If you believe that further disassembly is required, contact Kimber Customer Service or a qualified gunsmith.

1. Point the muzzle in a safe direction at all times.
2. Move the safety to position 2.
3. Keep your finger outside the trigger guard at all times and do not touch the trigger while removing the bolt.
4. Open the bolt and make sure the chamber and magazine are unloaded. Do not proceed unless unloaded.
5. If unloaded, close the bolt.
6. Remove the bolt from the action as described in the "Removal of the Bolt" section. (see page 46)



7. Using your hand, unscrew the cocking piece housing counter-clockwise out of the bolt.

⚠ WARNING

If the magazine is not removed (as applicable) and/or completely unloaded prior to cycling the bolt to clear the chamber, a cartridge in the magazine will be chambered when the bolt is closed. Removing the magazine (Hunter & Tactical Rifles only) alone will not unload the rifle. Once the magazine has been removed and/or completely unloaded, open the bolt and visually confirm the chamber is empty.

REASSEMBLY OF THE BOLT

1. Screw the cocking piece housing clock-wise into the bolt.
2. Insert the bolt back into the action, as described in "Installing the Bolt" section. (see page 45)

TRIGGER

The trigger on this rifle is a single-stage mechanism which is factory set to break between 3 and 3.5 pounds. The trigger is fully adjustable for over travel, depth of sear engagement and weight of pull. However, the trigger has been set by Kimber for the proper over travel and sear engagement designed for this rifle. If you believe that the trigger needs to be adjusted, contact Kimber Customer Service or a qualified gunsmith.

LOADING

Keep the muzzle pointed in safe direction and follow the rules of firearm safety and all other safety procedures at all times. Practice these steps with an unloaded firearm or dummy ammunition until you are completely familiar and comfortable with all procedures. Use live ammunition only when prepared to shoot. Only use clean, dry and high-quality factory-fresh ammunition in the firearm, of the proper caliber, that meets industry performance standards.

⚠ WARNING

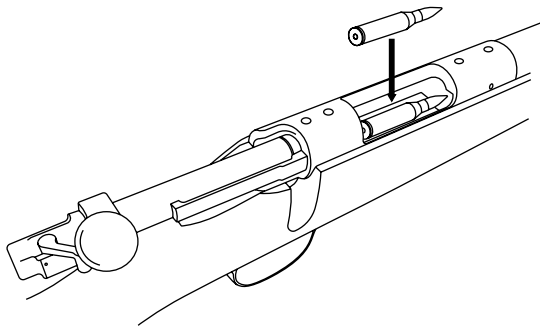
NEVER TOUCH THE TRIGGER WHEN LOADING OR UNLOADING THE FIREARM

Rifles with Internal Magazines

1. Hold the rifle in one hand and keep the muzzle pointed in a safe direction at all times.
2. With the bolt cocked, move the safety lever on the bolt to "Position 2".
3. Keep your finger outside the trigger guard at all times and do not touch the trigger while loading the rifle.
4. Rotate the bolt handle counter-clockwise to the fully open position and slide the bolt to the most rearward position.
5. Feeding one cartridge at a time, push the cartridges down into the magazine until the magazine is full.
6. Place your fingers through the ejection port and push the top cartridge further into the magazine and slowly slide the bolt over the

top cartridge into the most forward position and rotate the bolt handle clockwise to the fully closed position.

7. Rotate the bolt handle counter-clockwise to the fully open position and slide the bolt to the most rearward position, picking up a cartridge.



8. Push the bolt to the forward most position and rotate the bolt clockwise.
9. Move the safety lever to position 3.

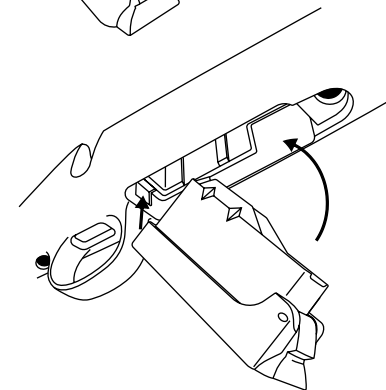
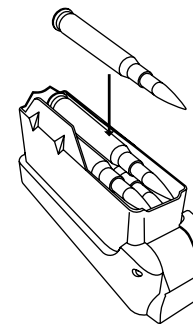
Rifles with Removable Box Magazines

1. Hold the rifle in one hand and keep the muzzle pointed in a safe direction at all times.
2. Keep your finger outside the trigger guard at all times and do not touch the trigger while loading the rifle.
3. With the bolt cocked, move the safety lever on the bolt to "Position 2".
4. Rotate the bolt handle counter-clockwise to the fully open position and slide the bolt to the most rearward position.
5. Remove empty magazine from rifle.
6. Feeding one cartridge at a time, slide the cartridges down into the removable box magazine until the magazine is full.
7. Insert the removable box magazine into the magazine well on the underside of the rifle stock.

8. Place your fingers through the ejection port and push the top cartridge further into the magazine and slowly slide the bolt over the top cartridge into the most forward position and rotate the bolt handle clockwise to the fully closed position.
9. Rotate the bolt handle counter-clockwise to the fully open position and slide the bolt to the most rearward position; picking up a cartridge. Push the bolt to the forward most position and rotate the bolt clockwise.
10. Move the safety lever to position 3.

⚠ WARNING

The firearm is able to fire with and without the magazine inserted if there is a cartridge in the chamber.



⚠ WARNING

The firearm is now fully loaded and ready to fire when the safety is off. Keep the muzzle pointed in a safe direction and follow rules of safe firearm handling. Always unload firearm immediately after use and before storage.

⚠ WARNING

Never use ammunition not specifically designated for use in your firearm. Failure to use the correct type or caliber of ammunition may cause the firearm to jam, fail to fire, have an obstructed bore, or even generate excessive pressure, which can cause death, serious injury or property damage.

⚠ WARNING

Do not use reloaded, hand-loaded, remanufactured or other non-standard ammunition. Use of any such ammunition can cause death, serious injury or property damage and voids all warranties. Kimber specifically disclaims responsibility for any

damage or injury whatsoever occurring in connection with, or as a result of, the use in Kimber firearms of faulty, reloaded, hand-loaded, remanufactured or other non-standard ammunition, or of cartridges other than those for which the firearm was originally chambered.

⚠ WARNING

Read through the entire manual before attempting to use this product. Safe operation of this firearm is your obligation, and requires that you completely read and understand this manual in its entirety.

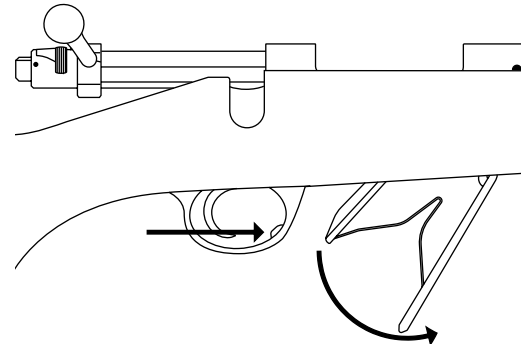
NOTE

Kimber recommends high quality, factory-fresh ammunition that meets SAAMI specifications.

UNLOADING

Rifles with Hinged Floor Plate

1. Keep the muzzle pointed in a safe direction at all times.
2. Move the safety on the bolt to position 2.
3. Do not touch the trigger and keep your finger outside the trigger guard throughout the entire unloading process.
4. Do not extract live (unfired) cartridges on to a surface which may indent a primer and cause the cartridge to discharge.



5. Rotate the bolt handle counter-clockwise and slide the bolt to the most rearward position—this will eject the cartridge that was in the chamber.
6. Push the floor plate release button located inside the front of the trigger guard to open the floor plate—this will release the magazine spring, follower and unfired cartridges from the internal magazine.
7. Remove unfired cartridges from the magazine.

⚠ WARNING

If the magazine is not removed (as applicable) and/or completely unloaded prior to cycling the bolt to clear the chamber, a cartridge in the magazine will be chambered when the bolt is closed. Removing the magazine (Hunter & Tactical Rifles only) alone will not unload the rifle. Once the magazine has been removed and/or completely unloaded, open the bolt and visually confirm the chamber is empty.

8. Visually check to ensure the magazine and chamber are empty.
9. Push the follower and magazine spring back into the magazine and close the floor plate.
10. Store the firearm properly in an unloaded condition as instructed in this manual (see pages 62)

Rifles with No Floor Plate

1. Keep the muzzle pointed in a safe direction at all times.
2. Move safety to position 2.
3. Do not touch the trigger and keep your finger outside the trigger guard throughout the entire unloading process.
4. Do not extract live (unfired) cartridges on to a surface which may indent a primer and cause the cartridge to discharge.
5. Rotate the bolt handle counter-clockwise and slide the bolt to the most rearward position—this will eject the cartridge that was in the chamber.

6. Cycle bolt until all rounds are removed from the magazine and the chamber is empty.
7. Visually check to make sure the magazine and chamber are empty.
8. Store the firearm properly in an unloaded condition as instructed in this manual (see pages 62)

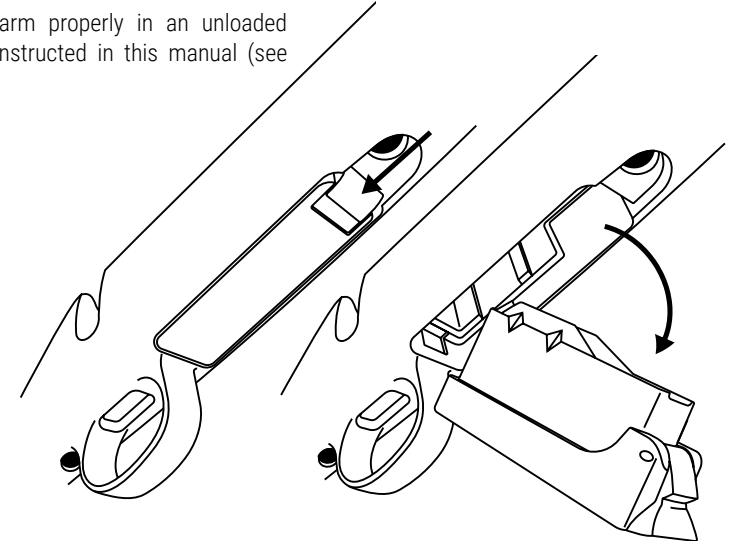
Rifles with Removable Box Magazine

1. Keep the muzzle pointed in a safe direction at all times.
2. Move safety to position 2.
3. Do not touch the trigger and keep your finger outside the trigger guard throughout the entire unloading process.
4. Do not extract live (unfired) cartridges on to a surface which may indent a primer and cause the cartridge to discharge.
5. Rotate the bolt handle counter-clockwise and slide the bolt to the most rearward position—this will eject the cartridge that was in the chamber.

6. Depress the magazine release button located on the magazine floorplate, and remove the magazine from the rifle.
7. Remove unfired cartridges from the magazine.
8. Visually check to ensure the chamber and magazine are empty.
9. Store the firearm properly in an unloaded condition as instructed in this manual (see pages 62)

⚠ WARNING

Read through the entire manual before attempting to use this product. Safe operation of this firearm is your obligation, and requires that you completely read and understand this manual in its entirety.



FIRING

⚠WARNING

Always wear eye and hearing protection when shooting. Failure to do so may result in hearing loss and/or eye injury. See page 12 in this manual.

1. Point the muzzle in a safe direction at all times.
2. Load the firearm as previously indicated in this manual. (see pages 49-52)
3. Establish a proper two-handed grip
4. Keep finger outside of trigger guard and clear of the trigger and the safety in position 3 until ready to fire.
5. Once on target and ready to fire, move safety to position 1, and place finger on the trigger.
6. Smoothly and continuously pull the trigger to the rear.
7. After firing the cartridge, fully release the trigger to the forward most position. Cycle the

bolt to extract the spent casing from the fired cartridge and chamber another round.

8. Move safety to position 3 unless you intend to immediately fire again.
9. If all cartridges are not fired and you wish to stop shooting, follow the procedures for unloading the firearm. (see pages 53-55)

⚠WARNING

In case of a failure to fire, continue to hold your firearm with the muzzle pointed downrange at the target for a minimum of 30 seconds. If after 30 seconds the round still does not fire, a hangfire (slow ignition) may possibly be the cause. If the round has not fired after 30 seconds, while keeping the muzzle of the firearm pointed in a safe direction, move the safety to position 2, rotate the bolt handle counter-clockwise and slide the bolt to the most rearward position, extract the cartridges from the firearm, and examine the extracted, unfired cartridge(s). If the indent from the firing pin is off center, light

or absent, take the firearm to a competent gunsmith or contact Kimber to arrange to have it examined by Kimber. If the firing pin indentation on the primer appears normal (compared to similar previously fired cartridges), the cartridge may be defective. Separate the cartridge from other live ammunition and empty cases, reload your firearm as instructed in this manual on pages 49-52 and resume firing.

⚠WARNING

If a bullet is in the bore or lodged in the barrel, do not attempt to fire another round or blank to dislodge the bullet. Such actions can generate excessive pressure that could cause death, serious injury or property damage.

⚠WARNING

Do not use a metal tool to attempt to remove an unfired cartridge. Such actions can ignite the primer and fire or rupture and send fragments out the ejection port with sufficient force as to cause death, serious injury or property damage.

⚠WARNING

Immediately stop firing and unload your rifle if the report or recoil seems weak or otherwise does not seem right. After unloading the firearm, check to be sure that no obstruction has become lodged in the barrel.

⚠WARNING

Read through the entire manual before attempting to use this product. Safe operation of this firearm is your obligation, and requires that you completely read and understand this manual in its entirety.

⚠WARNING

Do not disassemble your firearm beyond the point outlined in this manual. Do not manipulate any internal components beyond what you are instructed to do in this manual. Failure to follow this WARNING may damage or affect the reliability, safety or performance of your firearm, and such failure can create a potential risk of death, serious injury or property damage, and will void the warranty.

⚠WARNING

Do not alter, modify or replace any of the parts of your firearm unless this work is performed by Kimber or a qualified gunsmith using genuine Kimber parts. Failure to abide by this WARNING may damage or affect the reliability, safety or performance of your firearm, and create a potential risk of death, serious injury, or property damage and will void the warranty.

⚠WARNING

Kimber firearms should be cleaned after each use or exposure to the elements. Even when not in use, Kimber firearms should be cleaned and lubricated every six months to protect their appearance and ensure readiness.

⚠WARNING

Before using this firearm, carefully read this manual in its entirety, understand and follow all instructions and warnings. Failure to read this manual and understand and follow all instructions and warnings may result in an unsafe condition that could cause death, serious injury or property damage.

⚠WARNING

Never use ammunition not specifically designated for use in your firearm. Failure to use the correct type or caliber of ammunition may cause the firearm to jam, fail to fire, have an obstructed bore or even generate excessive pressure, which can cause death, serious injury or property damage.

⚠WARNING

If a bullet is in the bore or lodged in the barrel, do not attempt to fire another round or blank to dislodge the bullet. Such actions can generate excessive pressure that could cause death, serious injury or property damage.

⚠WARNING

Do not use reloaded, hand-loaded, remanufactured or other non-standard ammunition. Use of any such ammunition can cause death, serious injury, or property damage and voids all warranties. Kimber specifically disclaims responsibility for any damage or injury whatsoever occurring in connection with, or as a result of, the use in Kimber firearms of faulty, reloaded, hand-loaded, remanufactured or other nonstandard ammunition, or of cartridges other than those for which the firearm was originally chambered.

⚠WARNING

Read through the entire manual before attempting to use this product. Safe operation of this firearm is your obligation, and requires that you completely read and understand this manual in its entirety.

PREVENTATIVE MAINTENANCE

⚠ WARNING

Always ensure that your firearm is unloaded before cleaning, and follow the rules of safe gun handling and instructions in this manual. Wear appropriate eye protection (see page 12) when cleaning, and lubricating firearm.

CLEANING & MAINTENANCE

1. Keeping the muzzle of the firearm pointed in a safe direction, and fingers placed outside the trigger guard and away from the trigger at all times, confirm the firearm is unloaded, and if not, unload the firearm as instructed in this manual. (see page 53-55)
2. Remove the bolt from the action as instructed in this manual (see page 46).
3. Using a suitable bore guide and quality cleaning rod, run an oil soaked patch through the barrel starting at the chamber.
4. Run a patch wet with bore cleaning solvent through the barrel and let the solution soak a few minutes. Always read and follow the manufacturer's directions for the bore cleaner being used.
5. Run a dry patch to remove loose debris.
6. Run a bore brush wet with bore cleaning solvent through the chamber end of the barrel and out the muzzle, making several passes. Always read and follow the manufacturer's directions for the bore cleaner being used. Note: when using a cleaning rod, attach the bore brush after the rod is inserted in the barrel, then pull the brush through the barrel and out the muzzle.
7. Run a dry patch to remove loose debris.
8. Repeat steps 4 and 5 a few times until the patch comes out clean.
9. Lightly oil the barrel.
 - a. Run a dry patch through the barrel before firing to remove oil.

10. Clean the bolt and bolt breech face (where the firing pin exits), under the extractor, and anywhere else carbon and debris has built up (a toothbrush or similar nylon brush works well).
11. Wipe off all dirt on all exterior surfaces of the rifle.

NOTE

Ultrasonic cleaning is not recommended. Damage to the finish or parts cleaned using an ultrasonic cleaner are not covered under warranty.

12. Lightly lubricate the bolt and the inside of the receiver. Install the bolt as instructed in this manual. (see page 45)
13. Lightly lubricate the exterior surfaces of the rifle.
14. Wipe off any excess lubrication.

⚠ WARNING

Discharging firearms in poorly ventilated areas, cleaning firearms or handling ammunition may result in exposure to lead and other substances known to cause birth defects, reproductive harm, cancer and other serious physical injury. Have adequate ventilation at all times. Wash hands thoroughly after exposure.

⚠ WARNING

Wear appropriate eye protection (see page 12) when disassembling, cleaning, lubricating, and assembling firearm.

⚠ WARNING

Do not oil cartridges or spray lubricants, preservatives or cleaners on cartridges or where excess spray may come into contact with cartridges. Lubricants and other foreign matter on cartridges may cause potentially dangerous ammunition malfunctions. Oil and solvent can penetrate cartridge primers and

can cause misfires. To reduce oil and solvent contamination of cartridges, use a clean patch to remove excess cleaner and lubricant from the chamber, breech face and ejection port.

⚠WARNING

Read through the entire manual before attempting to use this product. Safe operation of this firearm is your obligation, and requires that you completely read and understand this manual in its entirety.

NOTE

For long-term storage or in high-humidity, damp or salty areas, a premium rust preventative such as Shooter's Choice Rust Prevent should also be used.

LONG-TERM STORAGE

1. Follow unloading, cleaning and lubrication instructions from this manual.
2. Apply a premium rust preventative product such as Shooter's Choice Rust Prevent and follow the manufacturer's instructions for proper application.
3. Select a safe and secure location for storage, one that follows the instructions and recommendations of this manual and all applicable laws, including but not limited to use of the cable lock provided with this firearm (see pages 10-11 for instructions regarding the cable lock). If possible, do not store the firearm in the factory-supplied case, or other rifle case as moisture may collect and cause damage.
4. If you plan on storing the firearm for extended periods of time between uses, clean and lubricate the firearm as instructed in this manual (see pages 60-62) every six months.

⚠WARNING

Always store this firearm with the chamber and magazine empty (unloaded) and bolt removed, and with the supplied cable lock properly installed and locked. Failure to do so could result in an unintentional discharge.

⚠WARNING

Keep out of reach of children. For increased safety, firearms should be stored unloaded in a location that is secure and inaccessible to children and any other unauthorized person, with ammunition locked securely in a different location.

⚠WARNING

Improper installation of the cable lock through the trigger guard can result in an unintentional discharge causing death, serious injury or property damage. While locking devices are an important aid to security measures, they are not a substitute for safe firearm handling and proper storage. Mechanical and locking devices can fail and/or be bypassed with enough time, knowledge, determination and equipment.

KIMBER LIMITED LIFETIME WARRANTY

Kimber pistols, revolvers and rifles proudly come standard with our Limited Lifetime Warranty. This Limited Lifetime Warranty is intended to deliver the highest level of confidence in quality, reliability and support when purchasing a Kimber firearm.

This limited lifetime warranty has been drafted in compliance with the Magnuson-Moss Warranty Federal Trade Commission Improvement act, which is effective for goods manufactured on or after December 31, 1995.

Kimber firearms are warranted, for the lifetime of the original purchaser and only to the original purchaser, to be free from defects in material and workmanship, provided the original purchaser has registered the product with Kimber within 60 days of the original purchase, subject to any state law restrictions. **NOTE: Residents of California and Virginia are not required to register their product to qualify for this Limited Lifetime Warranty. Kimber agrees to correct, by repair or replacement with a new or comparable model, a qualifying Kimber product without charge. Proof of original ownership (e.g., copy of a dated bill of sale showing original purchase of a new firearm) is required to be eligible for this Limited Lifetime Warranty. Kimber assumes no responsibility for product malfunction, physical injury or property damage resulting in whole or in part from criminal use, or negligence, improper or careless handling, unauthorized modifications, use of defective, improper, or hand-loaded ammunition, abuse, neglect, or any other influences beyond Kimber's control.**

This warranty does not apply to the normal wear of any parts or surface finish, including metal, wood, plastic, rubber, or other materials. This warranty does not cover repairs related to unreasonable use, corrosion, damage, barrels damaged by an obstructed bore. It also does not apply to loss or damage suffered during return shipment.

Kimber reserves the right to inspect the product before making replacement or repairs covered by this warranty.

Under no circumstances shall Kimber be held liable for incidental or consequential damages with respect to economic loss, injury or property damage resulting from the breach of either the express or implied warranty. This limitation does not apply to states that disallow the exclusion of consequential or incidental damages.

This warranty grants specific legal rights to the original retail purchaser only. Other rights may apply and vary from state to state. The terms of this warranty may only be changed in writing by an

officer of Kimber Mfg., Inc. The Kimber factory at 200 Industrial Blvd, Troy, AL 36081 USA is the only authorized repair location.

Register your product here:
<https://www.kimberamerica.com/warranty-registration>

OBTAINING KIMBER REPLACEMENT PARTS

⚠ WARNING

Only use Kimber replacement parts. Use of aftermarket parts can create unsafe conditions and will void the warranty. Kimber replacement parts are available at Kimber Master Dealers or at <http://store.kimberamerica.com>.

CUSTOM SHOP TREATMENTS

The Kimber Custom Shop™ can quickly and professionally modify or personalize any Kimber firearm. Services include installation of night sights, custom finishes, part replacement, checkering, melts, custom parts and tuning. For complete information, contact Kimber Customer Service.

CUSTOMER SERVICE

Kimber Customer Service (888) 243-4522
customerservice@kimberamerica.com

⚠ WARNING

This product was designed to function properly in its original condition. Do not alter any part or add or substitute parts or accessories not made or authorized for use by Kimber. Any such alteration could render the firearm unsafe, and will void the warranty.

⚠ WARNING

Do not alter, modify or replace any of the parts of your firearm unless this work is performed by a qualified gunsmith using genuine Kimber parts or by Kimber. Failure to abide by this WARNING may damage or affect the reliability, safety or performance of your firearm, and such failure will create a potential risk of death, serious injury or property damage, and will void the warranty.

⚠ WARNING

Read through the entire manual before attempting to use this product. Safe operation of this firearm is your obligation, and requires that you completely read and understand this manual in its entirety.



DIAGRAM AND PARTS LIST: CLASSIC RIFLES

(84M/84L/8400 WSM/8400 Magnum Actions)

- | | | |
|-----------------------------------|-----------------------------------|-----------------------------|
| 1. Receiver | 19. Trigger Housing | 37. Sling Swivel |
| 2. Recoil Lug | 20. Sear | 38. Grip Cap |
| 3. Barrel | 21. Trigger Finished | 39. Grip Cap Screw |
| 4. Scope Base Plug | 22. Sear Spring | 40. Sling Swivel Spacer |
| 5. Bolt | 23. Trigger Adjustment Nut | 41. Magazine Well |
| 6. Extractor Clip | 24. Trigger Pressure Screw | 42. Magazine Follower |
| 7. Extractor | 25. Trigger Overtravel Screw | 43. Magazine Spring |
| 8. Firing Pin | 26. Trigger Pivot Pin | 44. Trigger Guard Screw |
| 9. Firing Pin Spring | 27. Sear Contact Adjustment Screw | 45. Trigger Guard |
| 10. Cocking Piece Housing Locator | 28. Securing Pin | 46. Latch |
| 11. Safety Plunger Spring | 29. Trigger Spring | 47. Floor Plate |
| 12. Cocking Piece Housing Plunger | 30. Sear Pin & Eject Pin | 48. Trap Door |
| 13. Cocking Piece Housing | 31. Bolt Stop Screw | 49. Latch Spring |
| 14. Safety Fixing Pin | 32. Bolt Stop | 50. Trap Door Pin&Latch Pin |
| 15. Safety | 33. Bolt Stop Spring | 51. Take Down Front Screw |
| 16. Cocking Piece | 34. Ejector | 52. Take Down Rear Screw |
| 17. Cocking Piece Screw | 35. Ejector Spring | |
| 18. Trigger Fixing Screw | 36. Stock | |

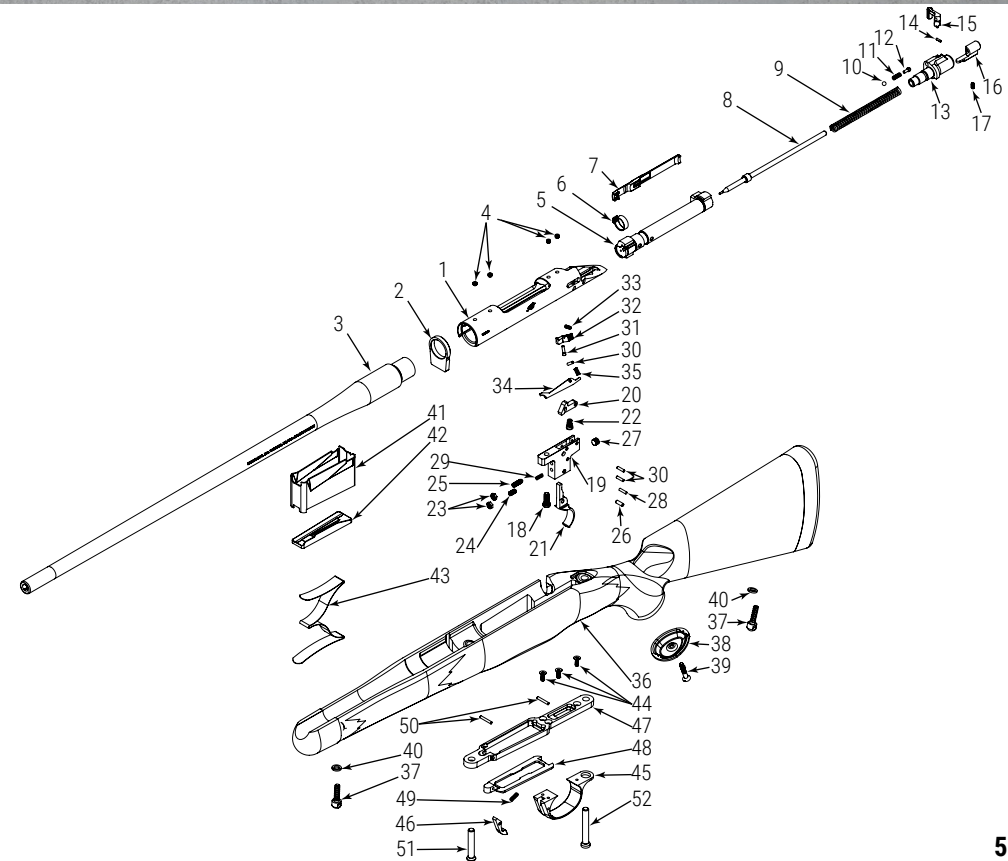


DIAGRAM AND PARTS LIST: HUNTER RIFLES

(84M/84L Actions)

- | | | |
|------------------------------|-----------------------------------|---------------------------|
| 1. Receiver | 18. Sear Contact Adjustment Screw | 35. Cocking Piece |
| 2. Recoil Lug | 19. Securing Pin | 36. Cocking Piece Screw |
| 3. Barrel | 20. Trigger Spring | 37. Stock Assembly |
| 4. Scope Base Plug | 21. Sear Pin & Eject Pin | 38. Detachable Magazine |
| 5. Bolt | 22. Bolt Stop Screw | 39. Takedown Screw, Front |
| 6. Bolt Handle | 23. Bolt Stop | 40. Takedown Screw, Rear |
| 7. Extractor Clip | 24. Ejector | 41. Recoil Pad Assembly |
| 8. Extractor | 25. Ejector Spring | |
| 9. Trigger Housing | 26. Bolt Stop Spring | |
| 10. Sear | 27. Firing Pin | |
| 11. Trigger Nickel Plated | 28. Firing Pin Spring | |
| 12. Sear Spring | 29. Cocking Piece Housing Locator | |
| 13. Trigger Adjustment Nut | 30. Safety Plunger Spring | |
| 14. Trigger Pressure Screw | 31. Cocking Piece Housing Plunger | |
| 15. Trigger Overtravel Screw | 32. Cocking Piece Housing | |
| 16. Trigger Pivot Pin | 33. Safety Fixing Pin | |
| 17. Trigger Fixing Screw | 34. Safety | |

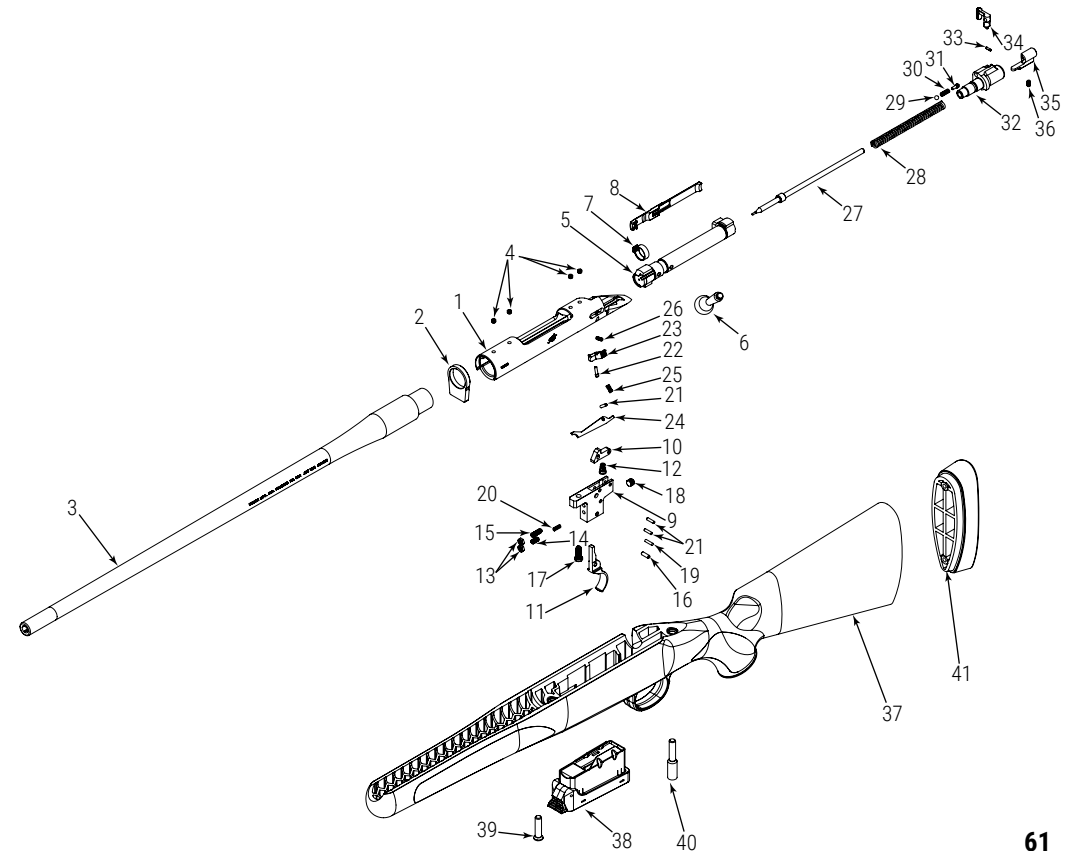
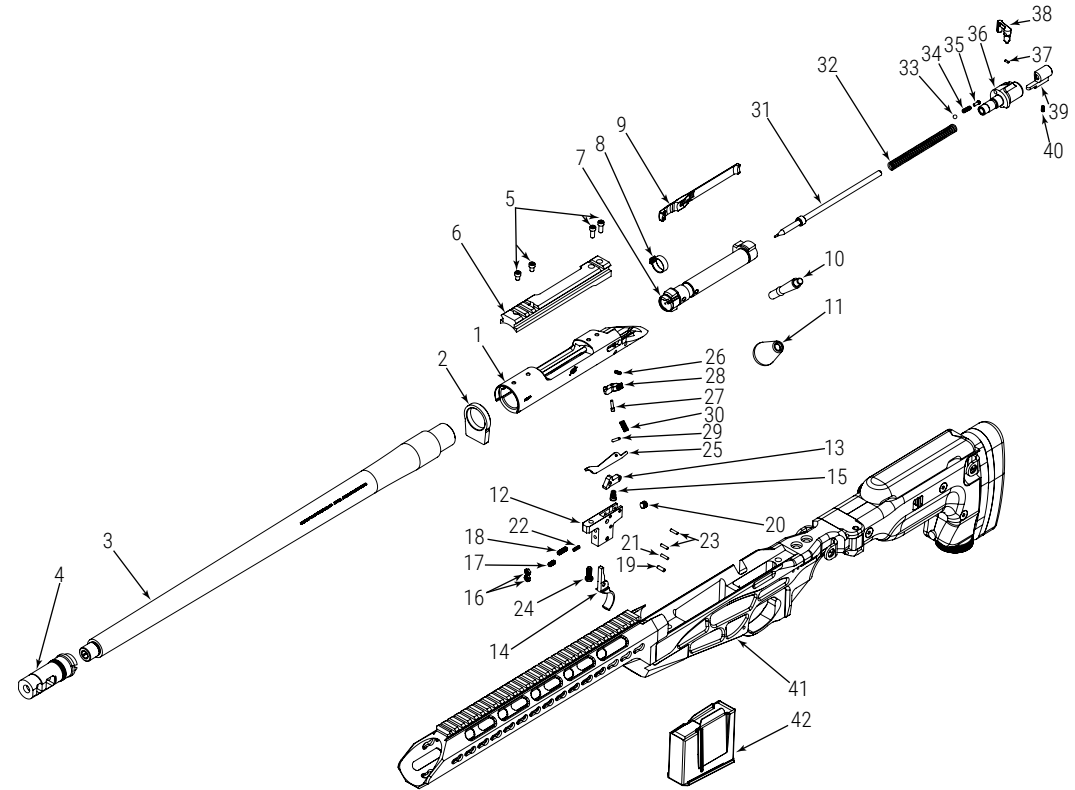


DIAGRAM AND PARTS LIST: TACTICAL RIFLES

(84M/8400 WSM/8400 Magnum Actions)

- | | | |
|--------------------------------------|-----------------------------------|-----------------------------------|
| 1. Receiver | 18. Trigger Overtravel Screw | 35. Cocking Piece Housing Plunger |
| 2. Recoil Lug | 19. Trigger Pivot Pin | 36. Cocking Piece Housing |
| 3. Barrel, Threaded | 20. Sear Contact Adjustment Screw | 37. Safety Fixing Pin |
| 4. Muzzle Brake, Surefire | 21. Securing Pin | 38. Safety |
| 5. Picatinny Rail Screws | 22. Trigger Spring | 39. Cocking Piece |
| 6. Tactical Base w/Picatinny Railraw | 23. Sear Pin & Eject Pin | 40. Cocking Piece Screw |
| 7. Bolt | 24. Trigger Fixing Screw | 41. Chassis Assembly |
| 8. Extractor Clip | 25. Ejector | 42. Magazine |
| 9. Extractor | 26. Bolt Stop Spring | |
| 10. Shaft, Bolt Handle | 27. Bolt Stop Screw | |
| 11. Bolt Knob | 28. Bolt Stop | |
| 12. Trigger Housing | 29. Ejector Pin, | |
| 13. Sear | 30. Ejector Spring | |
| 14. Trigger | 31. Firing Pin | |
| 15. Sear Spring | 32. Firing Pin Spring | |
| 16. Trigger Adjustment Nut | 33. Cocking Piece Housing Locator | |
| 17. Trigger Pressure Screw | 34. Safety Plunger Spring | |



RETURNING A FIREARM

General Return Guidelines

Before making any return, contact Kimber Customer Service at (888) 243-4522 to obtain an RMA (Return Merchandise Authorization) number. All returns must be accompanied by an RMA number. Returns arriving without a legible RMA number on the carton will be refused. Kimber assumes no responsibility for any goods that are lost or stolen in transit. If you would like to insure the value of the product being returned, you must arrange and pay for such insurance separately.

Once an RMA number has been assigned, please carefully review the following instructions. Please note that in addition to these general guidelines, shipments must comply with all applicable federal, state and local laws and regulations, as well as the requirements of the carrier. Please also note that these instructions may be updated by Kimber without notice. In such event, upon issuing an RMA number, Kimber will provide you with the then current instructions.

Firearm Returns

1. Remove all ammunition from the firearm and firearm case.
2. Remove scope from rifles before returning.
3. Pack the firearm in its original case and place it inside a plain cardboard carton. If original case is not available, please use another unlocked, padded container suitable to withstand rough handling. Use additional packing materials as needed.
4. Secure magazines (if applicable) and other loose parts under the foam to help prevent damage during shipment.
5. Write the RMA number clearly on each side of the carton in large print.
6. Schedule a pickup through UPS or bring the boxed firearm to the customer counter at the UPS Distribution Center. Ship in accordance with all UPS policies and procedures.
7. Retain a copy of the serial number, RMA number and shipping receipt for future reference.

8. Address the return to: Product Services Department, 1120 Saw Mill River Road, Yonkers, New York, 10710.

CAUTIONS:

- Firearms must be unloaded.
- Do not attempt to return a firearm without first obtaining an RMA number. Firearms arriving without a legible RMA number on the carton will be refused.
- Do not place ammunition in the carton with the firearm. Firearms and ammunition must be shipped separately.
- Do not disassemble the firearm prior to shipment.
- Do not risk damage to a firearm by leaving magazines (if applicable) or other loose parts unsecured in the return carton.
- Do not attempt to ship a firearm through the U.S. Postal Service or a UPS store. Do not leave a firearm at a UPS drop box.

- Kimber assumes no responsibility for damaged goods resulting from improper shipping or insufficient packaging.

Non-Firearm Product Returns

Non-firearm product returns may be shipped through any carrier (subject to any such carrier's applicable policies and procedures). Kimber recommends carriers with tracking capabilities.

Do not attempt to return any product without an RMA number. Contact Kimber Customer Service at (888) 243-4522 to obtain an RMA number.

SAFETY FIRST

1. Always keep the firearm pointed in a safe direction.
2. Always keep your finger off the trigger until ready to shoot
3. Always keep the firearm unloaded until ready to use.
4. Always treat the firearm as if it is loaded and ready to discharge.
5. Always follow rules of safe firearm handling.
6. Read and understand this manual in its entirety prior to using this firearm.
7. Kimber strongly recommends that every person receive firearms safety training prior to using this or any other firearm.



▷ NOTES